

FOOD AND DRINKS MENU

BORDELLO  
— BAR —

## ALLERGENS

1. CELERY
2. CRUSTACEANS
3. FISH
4. MILK
5. MUSTARD
6. PEANUTS
7. SOYA
8. GLUTEN
9. EGGS
10. LUPIN
11. SESAME
12. SULPHUR DIOXIDE
13. DAIRY
14. NUTS

# FOOD BITES

BY



**FRIX/LICIOUS**  
CREATIVEBURGERS

EXPERIENCE A WILD RANGE OF DELECTABLE BITES  
PAIRED PERFECTLY WITH YOUR FAVORITE DRINKS

# DRINK NIBBLES

---



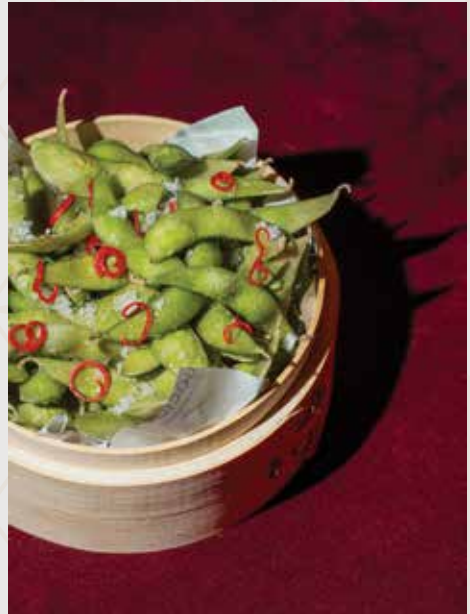
## AVOCADO & CRISPS

**Veggie**

*Avocado Mousse topped with fresh Pomegranate. Served with Crispy Flatbread*

Allergens | 4, 8, 11, 13

**10**



## SALTED EDAMAME

**Vegan**

*Steamed Edamame Beans, Flaked Sea Salt*

Allergens | 7

**8**



## PRAWN GYOZAS

**5pcs**

*Seared Prawn Dumplings, Yuzu Sauce, Togarashi Emulsion, Spiced Panko*

Allergens | 2, 3, 7, 8, 9, 11

**13**



## TEMPURA PRAWNS

**5pcs**

*Tempura Tiger Prawns, Spicy Mayo*

Allergens | 2, 5, 7, 8, 9, 10, 11

**14**

# TOGU SUSHI



## TOGU CALIFORNIA

8pcs

*Premium Tamanishiki Rice, Crab salad, Cucumber, Avocado, Tobiko Caviar, Japanese Mayo, Sweet Chili, Toasted Sesame*

*Allergens | 2, 3, 7, 8, 9, 10, 11, 12*

15



## EBI TEMPURA

8pcs

*Premium Tamanishiki Rice, Prawns Tempura, Cucumber, Avocado, Togarashi Mayo, Unagi Sauce, Tempura flakes*

*Allergens | 2, 5, 7, 8, 9, 10, 11, 12*

18



## EEL BBQ

8pcs

*Premium Tamanishiki Rice, Torched Eel Cucumber, Avocado, Marinated Carrots, Mild Spicy Mayo, House-Unagi Glaze.*

*Allergens | 3, 5, 7, 8, 9, 10, 11, 12*

18



## VEGGIE ROLL

8pcs

*Premium Tamanishiki Sushi Rice, Avocado, Cucumber, unagi glaze*

*Allergens | 7, 8, 10, 11, 12*

15

# GRANDE SUSHI PLATTER

32 PCS

*Allergens | 2, 3, 5, 7, 8, 9, 10, 11*



*8pcs California, 8pcs Ebi Tempura, 8pcs Eel Bbq, 2pcs Salmon Nigiri, 2pcs Unagi Nigiri*

60



# BUNS

---



## BEEF SLIDERS

3pcs

*Butter Brioche Buns, US Angus Beef Patty, Melted Cheese, Gherkins, Burger Sauce*

Allergens | 4, 5, 8, 9, 12, 13

**13**



## CRAB DYNAMITE BUNS

3pcs

*Butter Brioche Buns, Hand-Made Crab Patty, Crunchy Veggies, Dynamite Sauce*

Allergens | 2, 4, 5, 8, 9, 11, 13

**14**



## PRAWN SANDO

4pcs

*Brioche Slice Bread, 100% prawn patty, shredded Pickled vegetables, japanese mayonnaise, Sriracha Mayo*

Allergens | 2, 4, 5, 7, 8, 9, 11, 12, 13

**15**



## CHICKEN FAJITA ROLLS

3pcs

*Tortilla, chicken and peppers stuffing, Mexican spices, Red Cheddar, Avocado Mousse Dip*

Allergens | 4, 5, 7, 8, 9, 11, 13

**15**



# FROM THE GRILL

---

## US ANGUS STEAK

*CreekStone Farms Angus Steak, Unagi,  
Pickle Relish, Flaked Sea Salt*

*Allergens | 7, 8, 12*

**30**



## CHICKEN SATAY SKEWERS

**3pcs**

*Tender Chicken Breast marinated in  
traditional Satay, Peanut and Lime Dip*

*Allergens | 5, 6, 7, 11, 14*

**13**





# BAO

## CRISPY DUCK BAO

3pcs

*Soft Steam bun, Chinese Crispy Duck, 5 spices, Hoisin, Vegetables, Panko Breadcrumbs*

Allergens | 4, 5, 7, 8, 9, 11, 12

14

## PRAWN TEMPURA BAO

3pcs

*Soft Steam bun, Prawns Tempura, Dynamite Sauce, Vegetables*

Allergens | 2, 4, 5, 7, 8, 9, 11

14



# PINSA

LIGHT, CRISPY ROMAN-STYLE PIZZA WITH A SOFT, AIRY CENTER, TOPPED WITH FRESH INGREDIENTS."



## ITALIANA PINSA

*Pinsa flatbread (like pizza), House Tomato Sauce, Buffalo Mozzarella, Fresh Basil, Baby Rocket*

Allergens | 4, 7, 8, 13

15



## SALAMI PINSA

*Pinsa flatbread (like pizza), House Tomato sauce, Buffalo Mozzarella, Sliced Salami Sausage, Baby Rocket*

Allergens | 4, 5, 7, 8, 13

16



# DESSERT

---



## MOCHI ICE CREAM

5pcs

**Choose any of the flavours with total 5 pcs :**  
*Dark Chocolate | Strawberry cheesecake | Alphonso Mango.*

*Allergens | 7, 13, 14*

**12**

# PLATTERS

---

## FRUIT PLATTER

*Premium Collection of seasonal fruits*

**20**

## CHEESE & FRUIT PLATTER

*Our Premium Collection of Artisanal Cheese,  
Seasonal Fruits, Fig Jam*

*Allergens | 4, 7, 8, 13, 14*

**28**



# DRINKS

# CHAMPAGNES

	75cl
MUMM G.H.	120
MUMM G.H. ROSE	140
TAITTINGER COMTES DE CHAMPAGNE BLANC DE BLANCS	120
TAITTINGER COMTES DE CHAMPAGNE ROSE	140
DOM PERIGNON, 2009	520
DOM PERIGNON ROSE, REIMS 2005	860

# SPARKLING WINES

	15cl	75cl
PETALO AMORE MOSCATO D'AST	10	50
CORTE ALTA MALVASIA ROSE	10	60
BOTTEGA PROSECCO	10	60
BOTTEGA ROSE GOLD	10	60
BOTTEGA MAZONI PINK MOSCATO		60
BOTTEGA PROSECCO GOLD		65

# SWEET WINES

	50cl
COMMANDARIA AES AMBELIS	60



# SPIRITS

## VODKA

	5cl	70cl
ABSOLUT	10	120
URSUS ROTTER	10	120
SMIRNOFF NORTH	10	120

## PREMIUM VODKA

	5cl	70cl	150cl	175cl	300cl
ABSOLUT ELYX	12	140		300	600
BELUGA NOBLE	12	140	300		600
BELUGA TRANSANTLANTIC	12	150			

## ULTRA PREMIUM VODKA

	70cl
BELUGA GOLD LINE	680

## GIN

	5cl	70cl
BEEFEATER DRY	10	120
BEEFEATER PINK	10	120

## PREMIUM GIN

	5cl	50cl	70cl
BEEFEATER 24*	12		140
MALFY ORIGINALE	12		140
MONKEY 47	15	160	

## TEQUILA

	5 cl	70 cl
OLMECA BLANCO	12	140
OLMECA GOLD	12	140
ALTOS REPOSADO		180
ALTOS PLATA		180

# SPIRITS

## WHISKY

5cl 70cl

### Blended

BALLANTINE'S FINEST	10	120
JAMESON ORIGINAL	10	120
JAMESON CASKMATES IPA	12	140
JAMESON BLACK BARREL	14	160
CHIVAS REGAL 12YO	12	140
CHIVAS REGAL 15YO XV	14	160
CHIVAS REGAL 18YO	16	210
CHIVAS REGAL 21YO ROYAL SALUTE		380
CHIVAS REGAL ULTIS WHISKY (20Y)		500

### Single Malt

THE GLENLIVET FOUNDERS RESERVE	12	140
THE GLENLIVET 12 YO	12	140
DALMORE 12YO SHERRY CASK		260

### Bourbon

JACK DANIEL'S	12	140
---------------	----	-----

## RUM

HAVANA CLUB 3YO	10	120
HAVANA CLUB 7YO	12	140
HAVANA CLUB SELECCION DE MAESTROS	14	160

## COGNAC

MARTELL COGNAC VS	12	140
MARTELL COGNAC XO		500

# WINES

## WHITE WINE

	18.7 cl	
AES AMBELIS WHITE	10	
	15 cl	75 cl
AES AMBELIS, MOROKANELLA, CYPRUS	10	45
ALPHA ESTATE MALAGOUZIA, GREECE		50
ALPHA ESTATE SAUVIGNON BLANC, GREECE		50
HUGEL, RIESLING, FRANCE		60
LA CHABLISIENNE LA SEREINE, CHABLIS, FRANCE		60
CABLE BAY, SAUVIGNON BLANC, NEW ZEALAND		60
CESARI PINOT GRIGIO, ITALY		60
ZACHARIAS MOSCHOFILERO ORGANIC, GREECE		60

## RED WINE

	18.7 cl	
AES AMBELIS RED	10	
	15 cl	75 cl
TRAPICHE BROQUEL, MALBEC, ARGENTINA	10	50
SAN FELICE, CHIANTI CLASSICO, FRANCE		50
ALPHA ESTATE SYRAH, GREECE		60

## ROSE WINE

	18.7 cl	
AES AMBELIS ROSE	10	
	15 cl	75 cl
BOTTEGA, PINOT GRIGIO ROSE, ITALY	10	45
NELION ROSE (OFF DRY) CYPRUS		45
AES AMBELIS NYMPHES, CYPRUS	10	45
DOMAINE SAINT MARIE, PROVENCE (BIO), FRANCE		50
ALPHA ESTATE ROSE , GREECE		50



# COCKTAILS

## **MARILYN** 13

---

GIN, MARASCHINO,  
LEMON CORDIAL, VIOLET

## **GANGSTER'S PARADISE** 12

---

BOURBON,  
DEMERARA, BITTERS

## **NAUGHTY NEGRONI** 12

---

GIN, CAMPARI,  
SWEET VERMOUTH

## **MR. PRESIDENT** 14

---

GIN, GREEN CHARTREUSE,  
BLUEBERRY, MARJORAM

## **SPICY KISS** 15

---

RUM, SHERRY, BROWN BUTTER, APRICOT LIQUEUR,  
PINEAPPLE CORDIAL , SPICES (CINNAMON, CLOVES, STAR ANISE, PIMENTO)

## **MEDITERRANEAN SANGRIA** 12

---

VODKA, BLUE CURAÇAO, PEACH & PASSION FRUIT PUREE,  
CHARDONNAY, PROSECCO

## **GREAT GATSBY** 12

---

VANILLA ABSOLUT, VANILLA SYROP,  
PINEAPPLE PUREE, MELON LIQUER

## **BANDOLERO** 12

---

SPARKLING ROSE KIR ROYAL, CREME DE CASSIS LIQUER,  
BLUEBERRY SYRUP, PROSECCO

# LIQUER VERMOUTH APERITIF

	5 cl	70 cl
RAMAZZOTTI AMARO	8	110
KAHLUA	8	110
CAMPARI	8	110
SOUTHERN COMFORT	8	110
MEZZODI APERITIVO	8	110
FRANGELICO	8	110
AMERETTO DISARONNO	8	110
BAILEYS	8	110
MALIBU	8	110
SAMBUCA	8	110
DRAMBUIE	8	110
MASTICHA	8	110
BOTTEGA VERMOUTH BIANCO	8	110
BOTTEGA VERMOUTH ROSSO	8	110
JÄGERMEISTER	8	110

# SHOTS

ORDINARY (3CL)	5
PREMIUM (3CL)	6
SHOOTER (5CL)	7

# BEERS & CIDERS

HEINEKEN	7
HEINEKEN 0.0%	7
MORETTI	7
SOL	7
PAULANER WEISS	8
SMIRNOFF ICE	8

# SOFT DRINKS

LONDON ESSENCE PINK GRAPEFRUIT SODA	5
LONDON ESSENCE PEACH & JASMINE SODA	5
LONDON ESSENCE PINEAPPLE SODA	5
LONDON ESSENCE SODA	5
LONDON ESSENCE INDIAN TONIC	5
LONDON ESSENCE POMELO & PINK PEPPER TONIC	5
LONDON ESSENCE GINGER BEER	5
SOFT DRINKS	4
JUICES	4
RED BULL ENERGY DRINK	6

# MINERAL WATER

SPARKING WATER (25cl)	3
STILL WATER (75cl)	5